

Driver Installer Generator User's Manual

Table of contents

How to read this manual	3
Getting started	4
Supported environments	4
Creating an installer	5
Creating an installer with changed print settings.....	11
Using the Installer	15

How to read this manual

Notation

This manual uses Windows 10 as an example unless otherwise specified.

Depending on the OS and model you are using, the description may differ from this manual.

Marks



Indicates cautions and restrictions for correct operation of this software. Be sure to read them to avoid misoperation.



Indicates useful tips and references on how to use this software. We recommend you read them.

Notes

Trademarks

OKI is a registered trademark of Oki Electric Industry Co., Ltd.

Microsoft, Windows and Windows Server are registered trademarks or trademarks of Microsoft Corporation in the United States and other countries.

Other company names and product names are registered trademarks or trademarks of their proprietors.

About this manual

1. The reproduction of this manual, in whole or in part, without permission is strictly prohibited.
2. The content of this manual is subject to change without prior notice.
3. Efforts have been exerted to make the content of this manual as complete as possible. However, should you notice any errors, omissions or other problems, contact the retail store where you made the purchase.
4. Notwithstanding the item 3, we shall not have any liability in regard to any operational effect related to the instructions contained in this manual.

Copyrights of this manual

All rights belong to Oki Electric Industry Co., Ltd. This manual may not be reproduced, transcribed or translated without permission.

Make sure to obtain written approval from Oki Electric Industry Co., Ltd.

© 2020 Oki Electric Industry Co., Ltd.

Getting started

Driver Installer Generator is software that creates an installer of the printer driver.

By creating an installer for your specific environment, you can save the trouble of installing the printer driver.

This is useful in the following cases:

- When installing one printer driver on multiple computers
- When installing multiple printer drivers on one computer
- When installing the printer driver on the computer of a user without administrator privileges
- When managing installation information of the printer driver

This manual describes how to create and use an installer.

Supported environments

This software supports the following operating systems (OS):

- Windows 11
- Windows 10
- Windows 8.1
- Windows 8
- Windows Server 2022
- Windows Server 2019
- Windows Server 2016
- Windows Server 2012 R2
- Windows Server 2012

For the models and the types of printer drivers supported by this software, see the download page on the website.



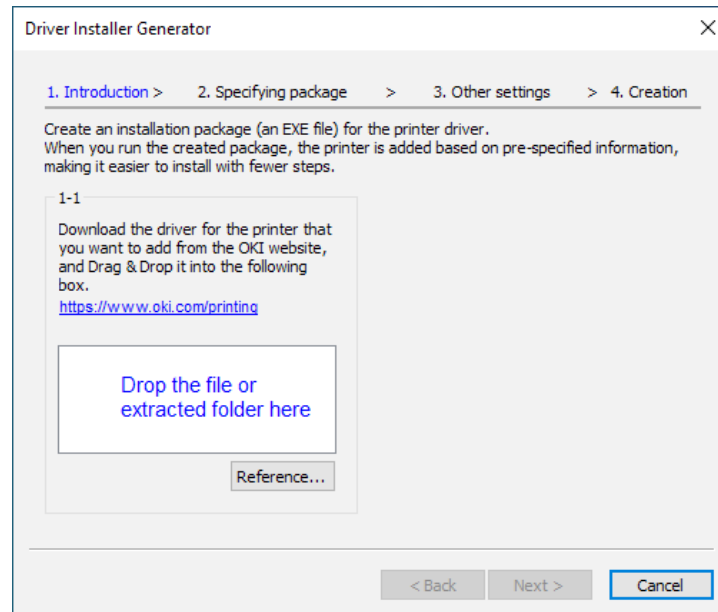
The supported OS may differ from those listed above depending on the type of the printer driver. Please check when downloading the printer driver.

Creating an installer

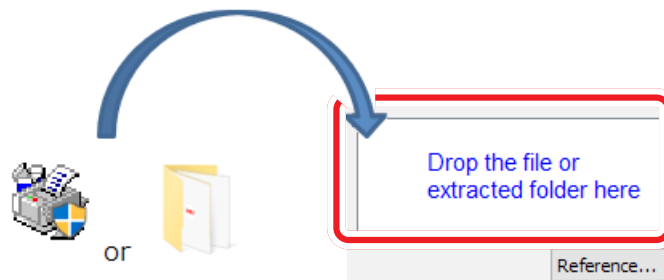
This chapter describes the procedure to create an installer.



To install the printer driver for more than one model, create an installer for each model.

- 1 Download this software from the website (<https://www.oki.com/printing>).
- 2 Double-click on this software to execute it.

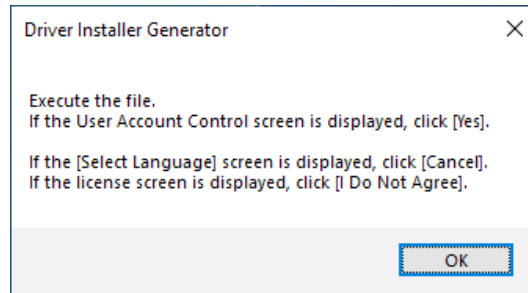


- 3 Download the printer driver from the website (<https://www.oki.com/printing>).
- 4 Drag and drop the downloaded printer driver onto the tool.

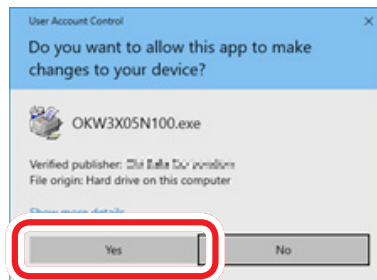


-  You can also click [Reference] to specify the location where the printer driver is saved and add the printer driver.
-  You can also execute the downloaded printer driver and use the extracted folder.

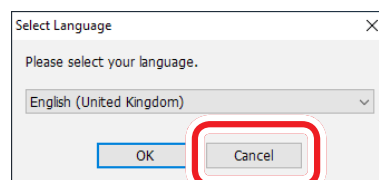
- 5** Click on [OK] on the displayed confirmation screen. The printer driver program will be executed.



-  • When the [User Account Control] screen is displayed, click [Yes].



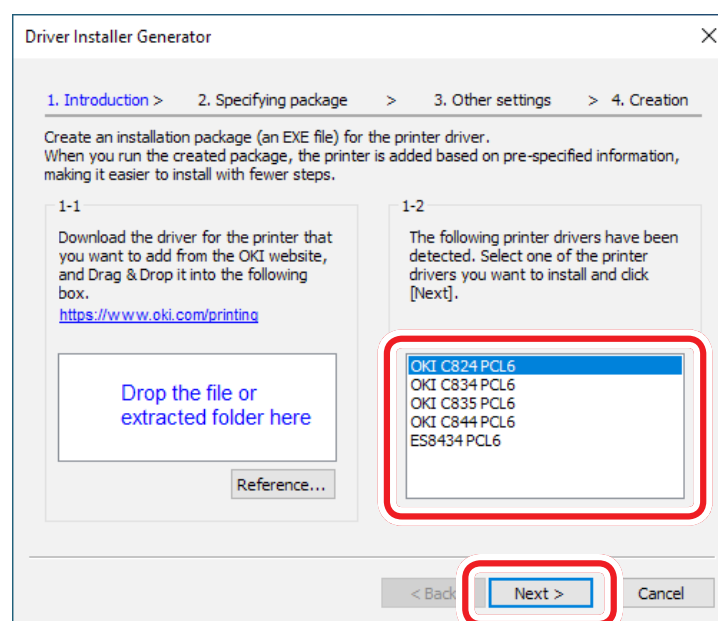
- When the [Select Language] screen is displayed, click [Cancel].




- When the [License] screen is displayed, click [I Do Not Agree].



- 6** A list of available printer drivers will be displayed. Select your printer and click on [Next].



 You can also select any printer other than your printer. In that case, the installer will be connected to its default destination.

- 7** On clicking [Refer to the manual], a separate screen will be displayed to confirm the content of the setting items.

Driver Installer Generator

1. Introduction > 2. Specifying package > 3. Other settings > 4. Creation

Specify and confirm the information of the installation package that you want to create. For details of the information to be specified, refer to the manual. Here you can also import a file other than the default CSV file. Use commas as the separator in the CSV file.

Refer to the manual...

Installer name	Admin user name	Admin password	Printer name	Connect to
InstallPackage			OKI C824 PCL6	192.168.0.1

< >


Launch the app and edit... Import... Export...

< Back Next > Cancel

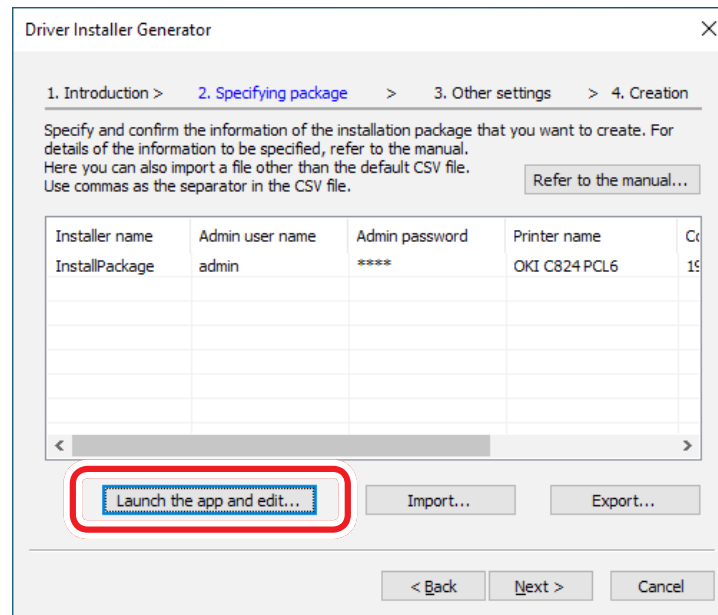
You can set the following items:

- Model and number of printer drivers to be installed
- Package information

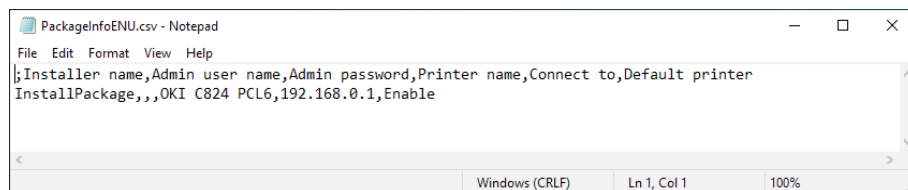
Installer name	Specify the name of the installer to be created.
Admin user name	It is the logon user name of the administrator. Leave it blank if only the administrator will be using the installer.
Admin password	It is the password for logging in as an administrator. Leave it blank if only the administrator will be using the installer.
Printer name	Specify the name of the printer to install.
Connect to	Specify the IP address of the printer for which the printer driver is being installed. If you do not know the IP address of the printer, set the default value (192.168.0.1) and reset the IP address of the printer after installation.
Default printer	Set whether to specify the printer as the default printer.

 For confidentiality, we recommend that you delete the installer after installation.

8 Click on [Launch the app and edit].



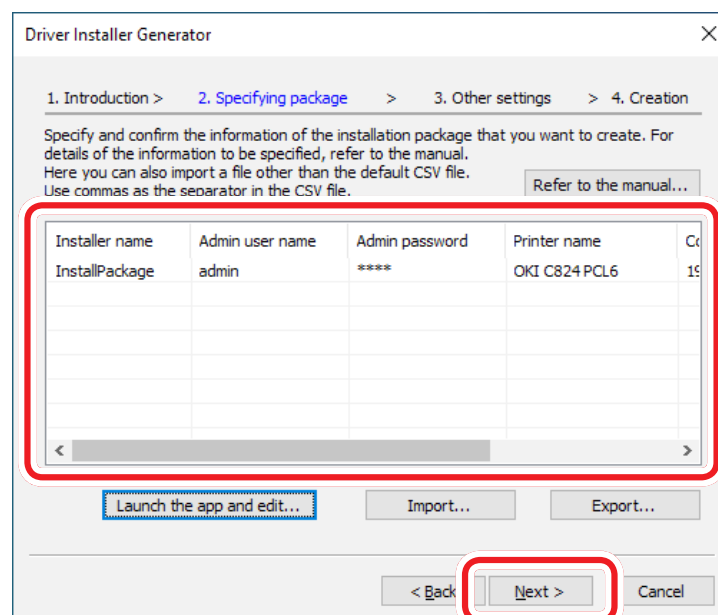
9 As Notepad opens, input the installation information by referring to the pattern example displayed by clicking on [Refer to the manual].



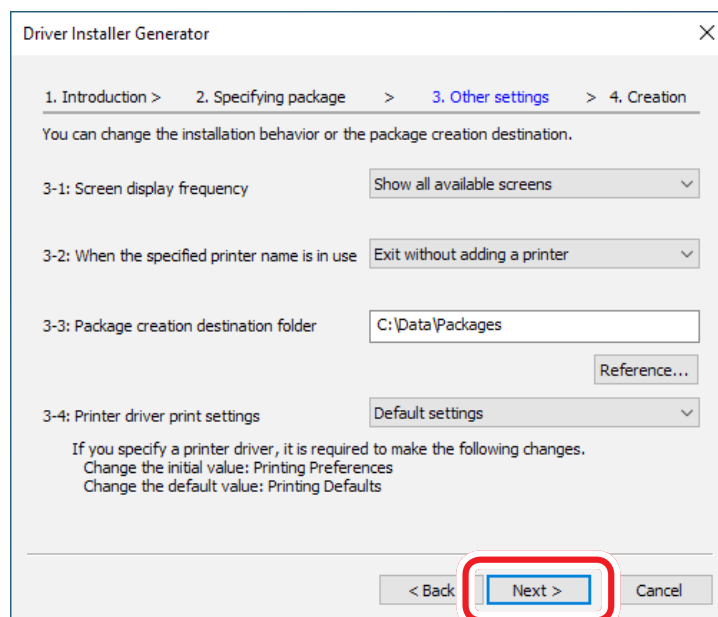
10 Select [Save] from [File] in the Notepad to save.

11 Close the page opened by clicking on [Refer to the manual].

12 Check that the installation information you input is displayed, and click on [Next].



13 Set the operation when the installer is used, and click on [Next].



You can set the following items.

- 3-1 Screen display frequency

Do not show any screens (Silent mode)	No screen is displayed during installation.
Show the progress screen only	A screen is displayed showing the progress of the installation. Once the installation is complete, the screen will be closed automatically.
Show all available screens	A screen is displayed showing the progress of the installation. When the installation is complete, manually close the screen.

- 3-2 When the specified printer name is in use

Exit without adding a printer	Quit without installing the printer driver.
Rename the printer to be added (1 Copy)	Add a suffix (1 copy) to the name of the printer to be added before the installation.
Rename and add an existing printer	Change the name of an existing printer to be added by adding (Old 1) to its name before the installation.
Delete and add an existing printer	Delete an existing printer before the installation.

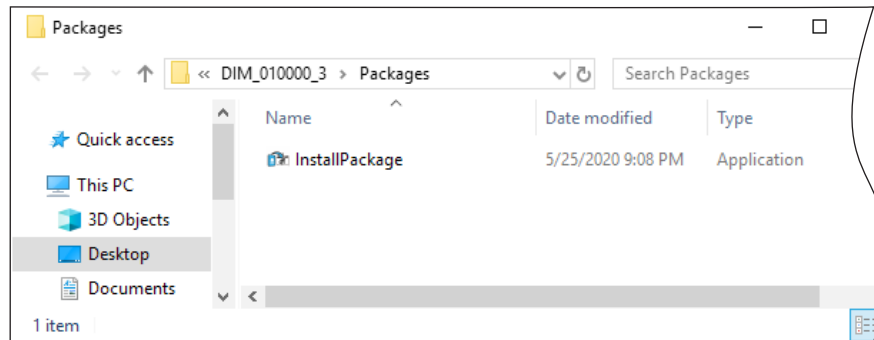
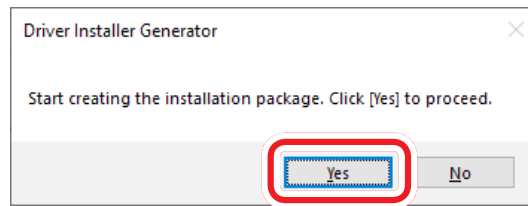
- 3-3 Folder for creating the package

By default, the package will be created in the folder containing this software.

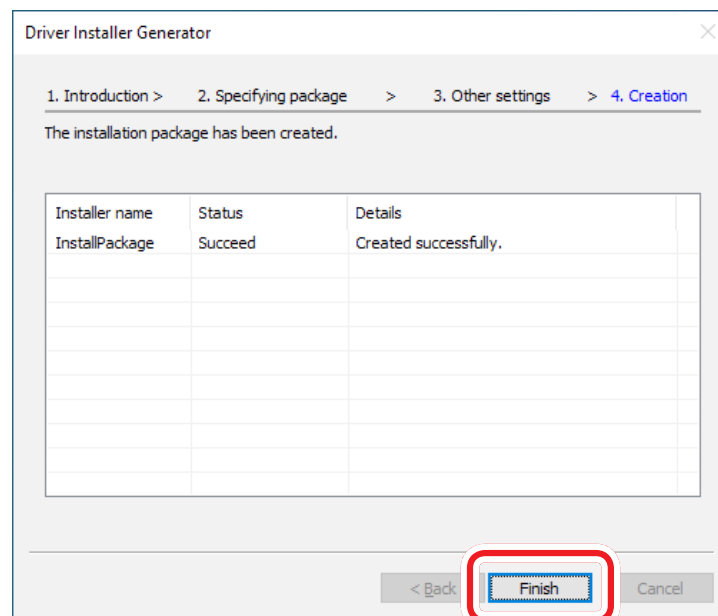
- 3-4 Printer driver print settings

Default settings	Install with the default settings.
Printer name	Install with the print settings of the specified printer. You can specify the printer with the printer driver specified in Step 4 if it already exists in [Devices and Printers]. For the detailed procedure, check [Creating an installer with changed print settings].

- 14** Click [Yes] on the confirmation screen.
The Installer will be created in the folder specified at 3-3 in Step 13.



- 15** Click on [Finish].

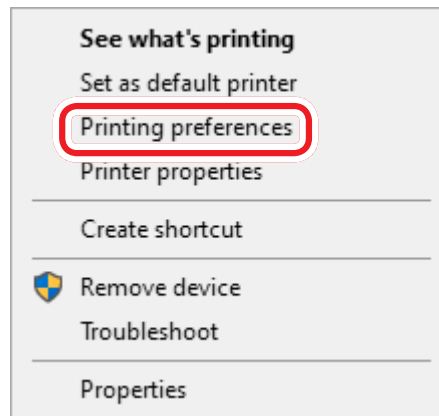


Creating an installer with changed print settings

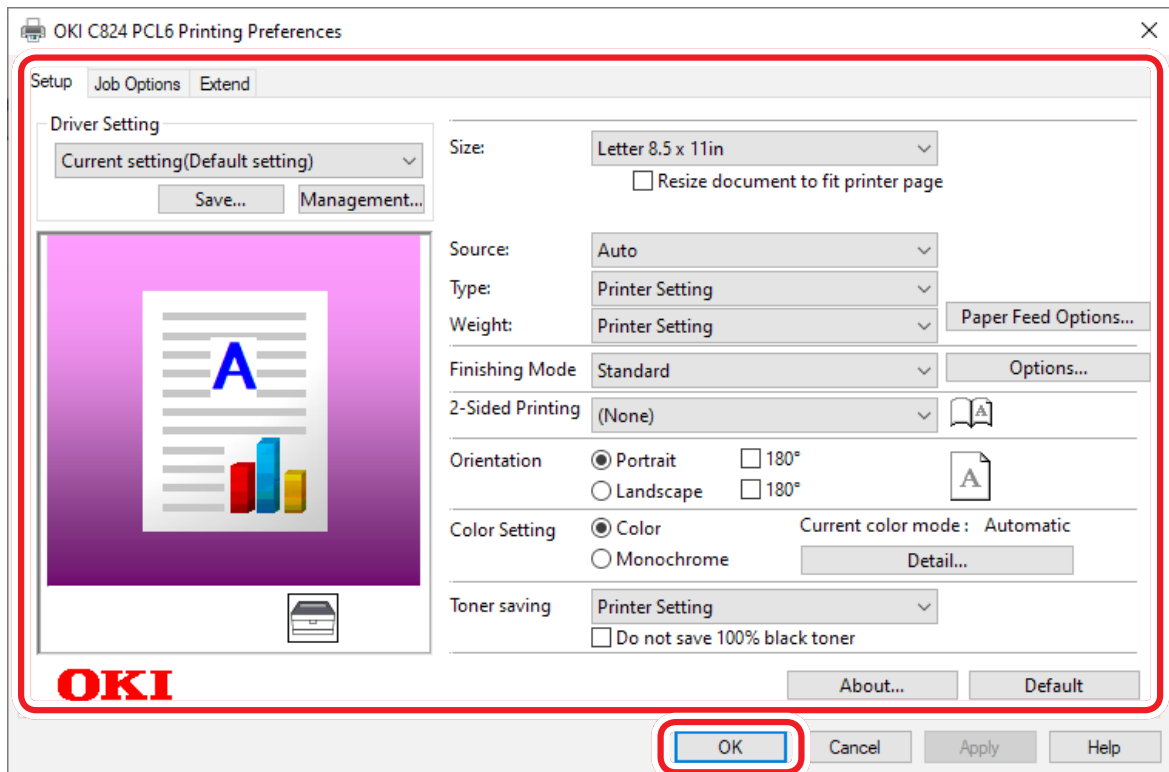
This chapter describes the procedure to create an installer with changed print settings. Please check only when changing the print settings.

To create an installer with changed print settings, install the printer driver and change the print settings before creating the installer.

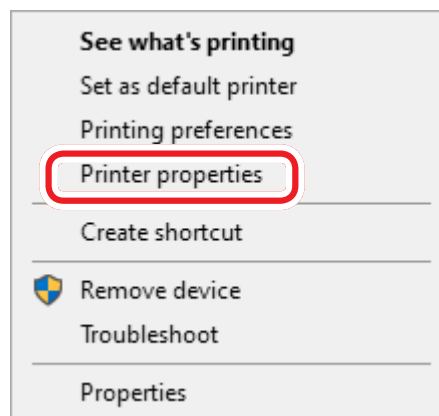
- 1** Download the printer driver for your printer from our website (<https://www.oki.com/printing>).
- 2** Double-click on the printer driver to install it.
- 3** After installation, click [Start] on Windows to display the list of applications.
- 4** Select [Windows System Tools] - [Control Panel] - [Devices and Printers], and check that the installed printer is displayed.
- 5** Right-click on the installed printer, and click [Printing preferences].



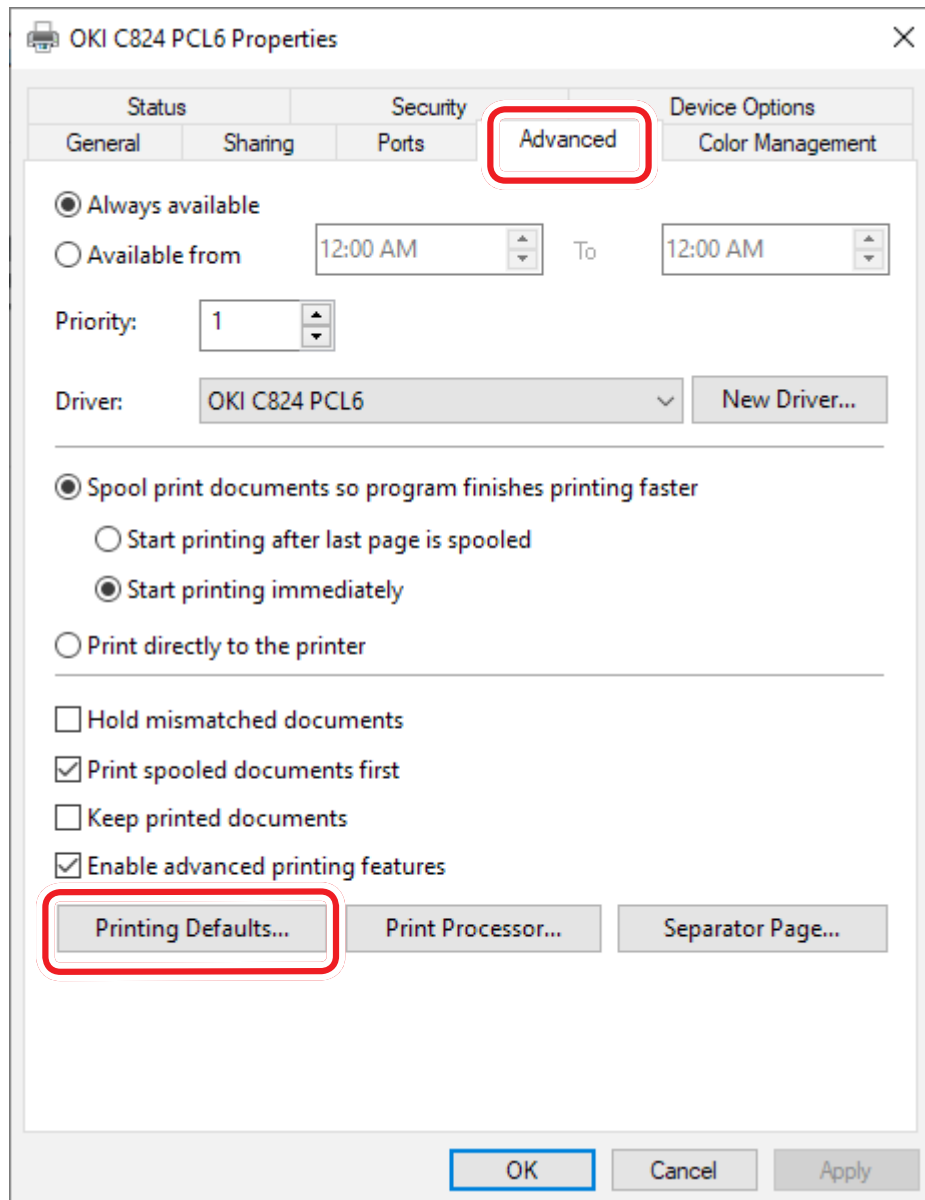
- 6 Change the print settings you want to set after installation, and click [OK].



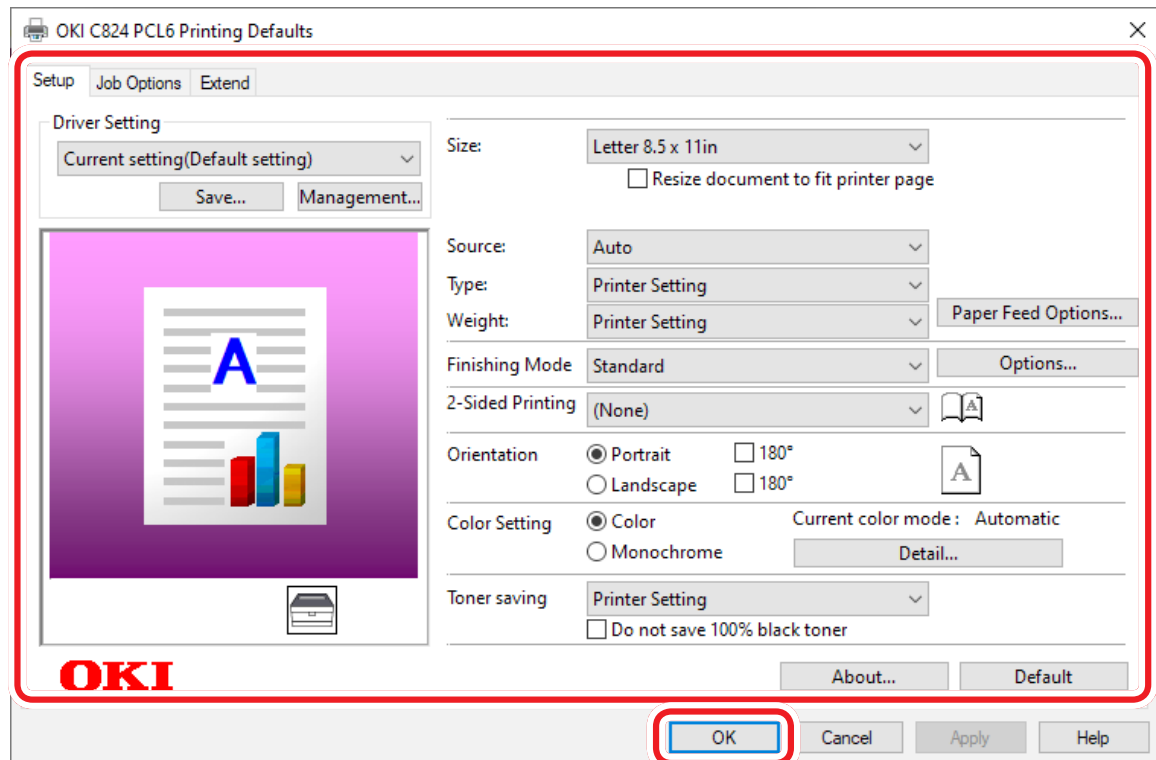
- 7 Right-click on the installed printer, and click [Printer Properties].



8 On the [Advanced] tab, click [Printing Defaults].

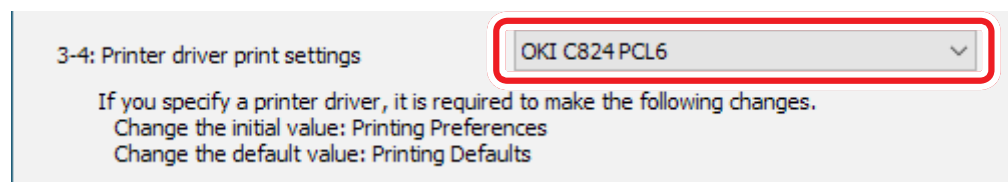


9 Change to the same setting value as in Step 6, and click [OK].



It is recommended to make the same changes in [Printing preferences] and [Printing Defaults] so that the default values after [Default] is clicked are the same as the initial values after installation.

10 Follow the procedure in "Creating an installer" in the previous chapter, specify the printer installed in this chapter in 3-4 [Printer driver print settings] of Step 13, and create an installer with the changed print settings.

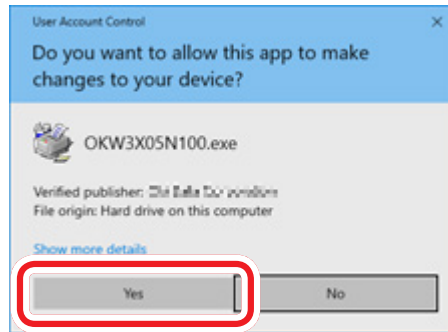


<Restrictions>

- ① The following items cannot be installed by changing the setting value. Please change the setting value after installation.
 - Information on the Device Options tab
 - Information on the added paper
 - Watermark information
 - Overlay information
 - Font information
- ② Depending on the file to be printed, the print settings retained in the file may be used and the default print settings changed by this installer may not be reflected. In this case, change the print settings from the print menu of the file before printing.

Using the Installer

- 1 Double-click on the installer created by following "Creating an installer".
- 2 When the [User Account Control] screen is displayed, click [Yes].



- 3 Click on [Start] on Windows to display the list of applications.
- 4 Select [Windows System Tool] - [Control Panel] - [Devices and Printers], and check that the installed printer is displayed.
- 5 For the installer with the print settings changed, right-click on the installed printer and click [Printing preferences].
- 6 The [Printing preferences] screen is displayed. Check that the setting value has been changed.

